



40TH ANNIVERSARY



The Association of Consulting Engineers of Hong Kong
香港顧問工程師協會

40TH ANNIVERSARY ALBUM



The Association of Consulting Engineers of Hong Kong

香港顧問工程師協會



TABLE *of* CONTENTS

4 / FOREWORD BY CHIEF EXECUTIVE OF HONG KONG SAR

5 / FOREWORD BY CHAIRMAN OF ACEHK

6 / ABOUT ACEHK

7 / ABOUT THIS ALBUM



08 / OUR CITYSCAPE



32 / CONNECTIVITY



54 / OUR WATER & ENVIRONMENT RESOURCES



58 / THE ART OF CONSTRUCTION

94 / PAST CHAIRMEN OF ACEHK

95 / ACEHK COUNCIL 2016 / 2017

96 / MEMBERS OF ACEHK

97 / ACKNOWLEDGEMENTS



FOREWORD BY CHIEF EXECUTIVE *of* HONG KONG SAR

I congratulate the Association of Consulting Engineers of Hong Kong on its 40th anniversary.

Over the past four decades, Hong Kong, then one of the Four Asian Tigers, has evolved into Asia's World City. Indeed, it has reinvented itself on a global scale, rising from a low-cost manufacturing base to become one of the world's leading financial and trade centres. And through all these changes, our consulting engineers have been among the key players, enhancing our infrastructure at every stage, from planning and design to construction and management.

In celebrating the 40th anniversary of the Association, we should focus on what we are doing now to ensure our success over the next 40 years. A great deal, I would say, including such major infrastructural projects as Hong Kong International Airport's Three Runway System, the Express Rail Link and the Hong Kong-Zhuhai-Macao Bridge. We are also boosting land supply for housing and commercial development, while adopting a low-carbon, smart city model for our new growth areas.

In these, and other landmark projects, we will, no doubt, face many challenges. With the active involvement, and support, of our consulting engineers, however, I am confident that we will achieve our vision of developing Hong Kong into an even more stimulating, sustainable and economically competitive global city.

I wish the Association of Consulting Engineers of Hong Kong every success in the years to come.

C Y LEUNG

Chief Executive

Hong Kong Special Administrative Region



FOREWORD BY CHAIRMAN *of* ACEHK

As we celebrate the 40th anniversary of the Association of Consulting Engineers of Hong Kong (ACEHK), it is my great pleasure to present to you our ACEHK 40th Anniversary Album to celebrate this special occasion.

The photos in this album were selected from the ACEHK 40th Anniversary Photo Competition, and revolve around the theme of "Creation from Engineers". We, as consulting engineers, have to hold paramount our innovation and creativity to aid our fellow professionals and stakeholders in the industry to overcome challenges sustainably and efficiently. We shall continue to advocate our vision of "Hong Kong is our home" by maintaining a high standard for ourselves, and thereby empowering others in the industry.

This album captures our most iconic infrastructure projects, and the finest moments in our constant pursuit of the betterment of Hong Kong. It is evident that our collective effort and dedication have undoubtedly carried this city to where it stands today. Looking at these photos, not only do we realize how far we have come as an association, we also gain a reliable bearing for our future endeavors to better serve, and build for our community.

On behalf of the Association, I extend my sincere gratitude to the talented photographers for their contribution, and organizing parties for all their efforts and time put forth into constructing this album dedicated to our 40 years of success. I trust that you will enjoy this embodiment of our honor and care in our duties as consulting engineers.

Ir Francis W C KUNG

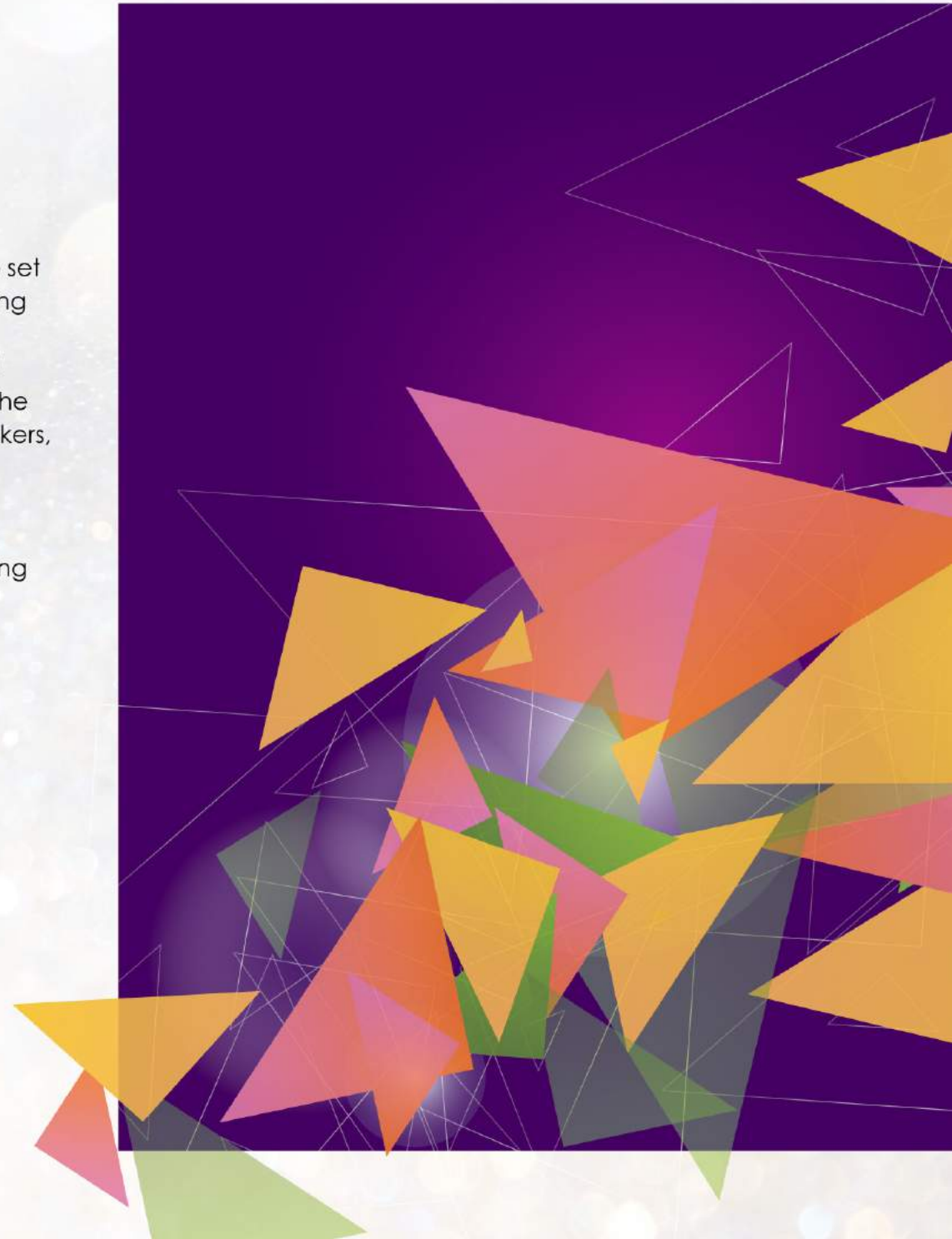
Chairman

The Association of Consulting Engineers of Hong Kong

ABOUT ACEHK

The Association of Consulting Engineers of Hong Kong (ACEHK) is a non-profit making association representing the consulting engineering profession in Hong Kong. As an industry group, the association seeks to set and maintain standards of professional conduct and ethics of consulting engineers, promote the advancement of the profession of consulting engineering and promote the professional interests, rights, powers and privileges of consulting engineers. ACEHK places high importance on the business interests of its members and assist authorities, developers, bankers, funding agencies and others requiring engineering services to select consulting engineers. The association is a member association of the International Federation of Consulting Engineers (FIDIC). Currently, its membership comprises 28 international and local consulting engineering firms operating in Hong Kong.

For more details, please refer to the website of ACEHK (<http://www.acehk.org.hk>).





ABOUT THIS ALBUM

To commemorate its upcoming 40th anniversary, ACEHK organised a photo competition entitled "Creation from Engineers". This competition was aimed to honour the contribution of consulting engineers to the development of Hong Kong.

The competition was open to all, both professionals and the public, with two categories of entries: Individual and Corporate. Over 200 entries were received. They were judged based on four criteria: (1) usage of colour and light; (2) expression and elaboration of ideas; (3) creativity; and (4) entry caption and explanation.

This album is a collection of selected photo entries to the competition including the winners. It is hoped that this album will serve as a celebration of the development of Hong Kong as well as a reminder of the contribution of those – including the consulting engineers, in the construction industry.

OUR CITYSCAPE

Our cityscape has changed drastically over the last 40 years as Hong Kong evolved from an aspiring Asian city to a genuine metropolis. Urbanisation of the city never ceases as the population grows and businesses take advantage of the city's opportune location and its free market economy. The city holds the record of having the largest number of skyscrapers and high-rises in the world by a considerable margin, making it boast one of the world's most iconic city skylines. Yet, space for leisure and well-being is never forgotten.





COPYRIGHT BY ACEHK





COPYRIGHT BY ACEHK



Silhouette of Steel



Exchange Square



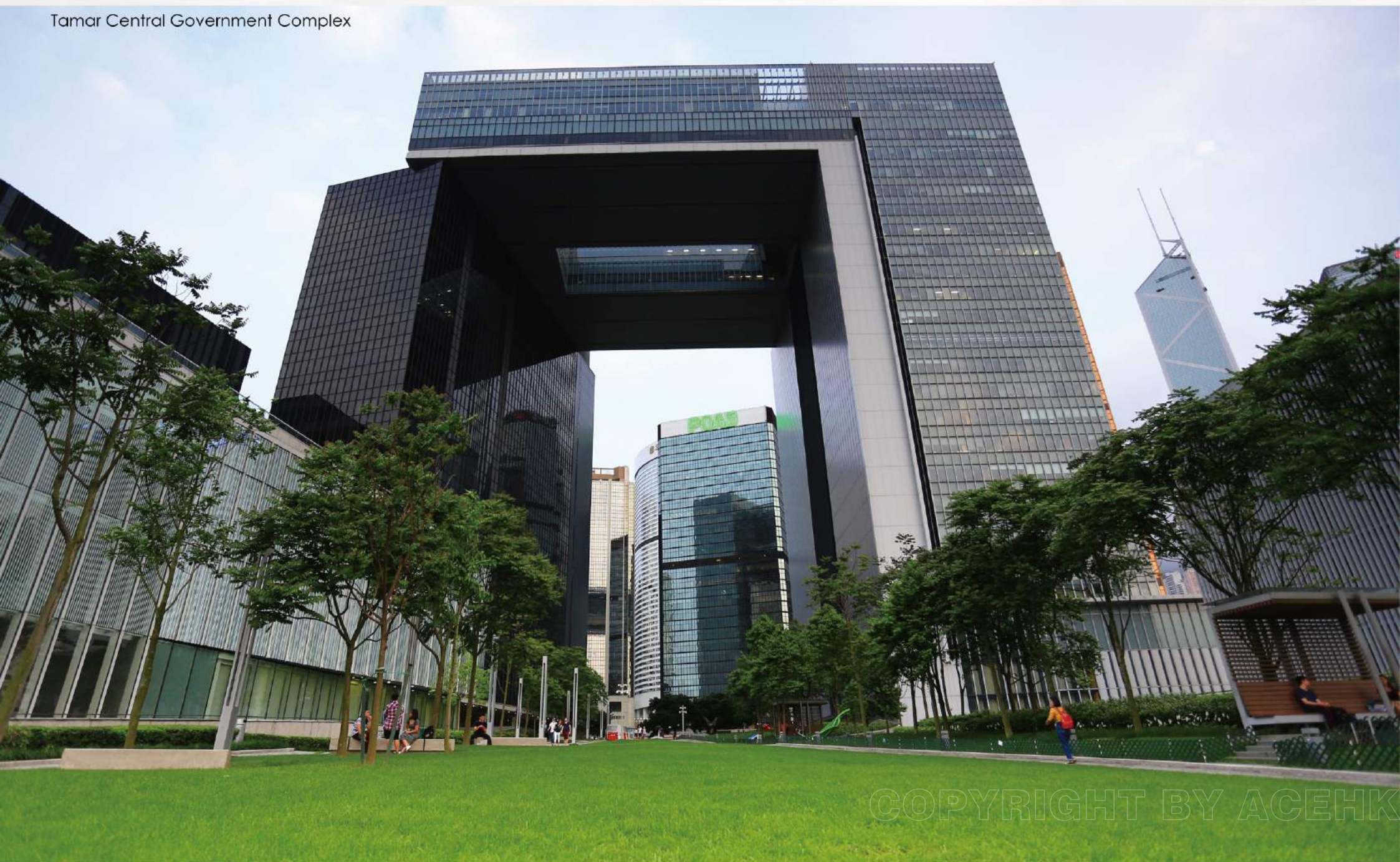
Kai Tak Cruise Terminal

COPYRIGHT BY ACEHK

Central Development



Tamar Central Government Complex



COPYRIGHT BY ACEHK



Comix Home Base



Hong Kong Convention and Exhibition Center

Polyu Jockey Club Innovation Tower





COPYRIGHT BY ACEHK



Student Hostel of University of Hong Kong



Tung Chung Development



Hong Kong Science Park



International Commerce Centre, West Kowloon

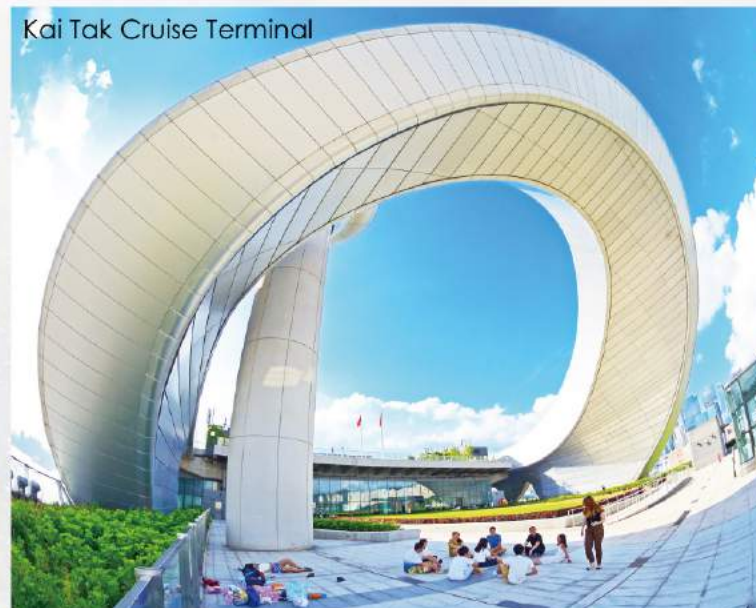


Tamar Central Government Complex

Hong Kong Coliseum



Kai Tak Cruise Terminal



Bank of China



Hong Kong Convention and Exhibition Centre



Hong Kong Science Park



Kai Tak Cruise Terminal



Shatin Development

Hong Kong Science Park



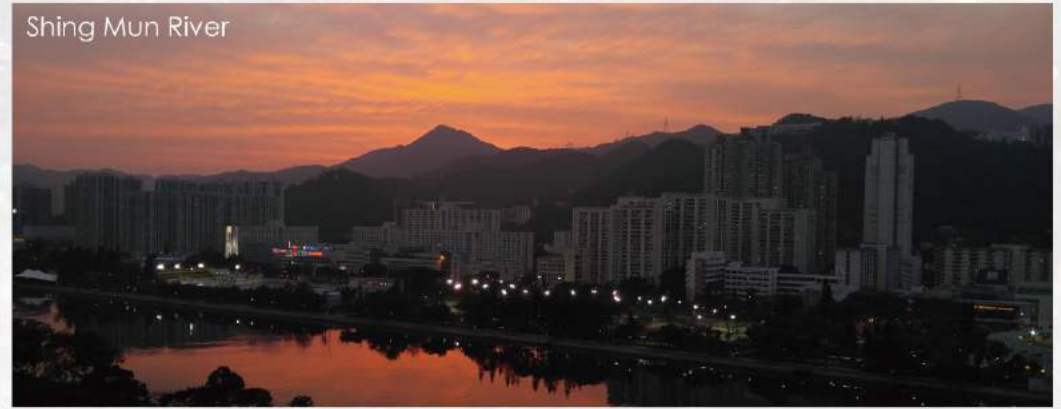
1881 Heritage



Hong Kong Science Park



Shing Mun River



Hong Kong Velodrome



Housing at the Foothills of Lion Rock





COPYRIGHT BY ACEHK



COPYRIGHT BY AOEHK



COPYRIGHT BY ACEHK

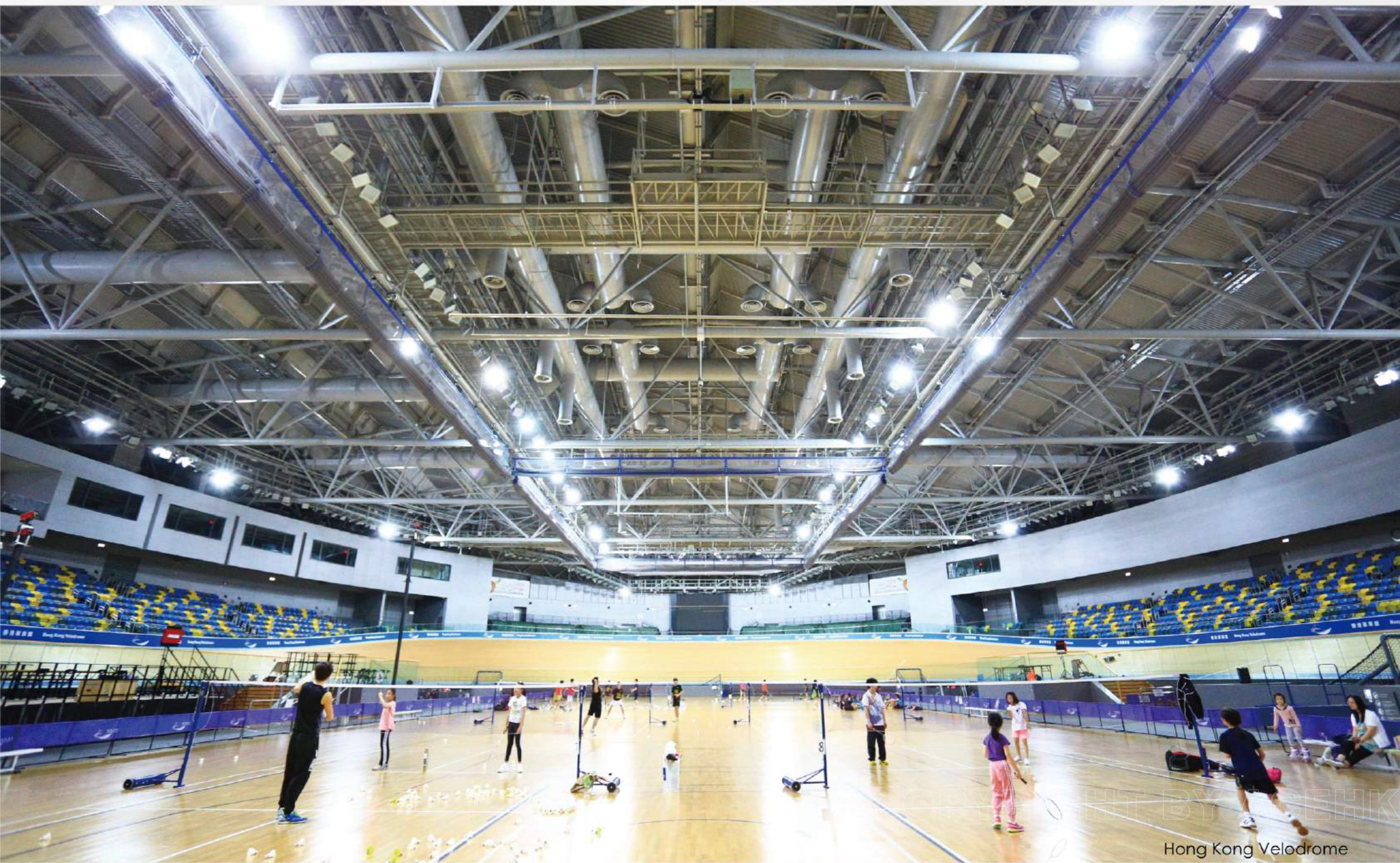
Old Public Housing



COPYRIGHT BY ACEHK



COPYRIGHT BY ACEHK



Hong Kong Velodrome

KAI TAK CRUISE TERMINAL

建設香港樂天倫

Bronze Award
(Individual Category)

顧問工程師在建設此新穎的郵輪碼頭時，注入以人為本之元素，為繁忙的都市人在城市新建設中帶來一片休憩空間，以享天倫之樂。

- CHUNG Tak Wan





COPYRIGHT BY ACEHK



CONNECTIVITY

Hong Kong's sophisticated transport network and infrastructure attest to its reputation as a major economic hub and the world's most well-connected city. With a world renowned international airport, a rapid transit rail system and an ever-improving road network, Hong Kong has one of the world's most advanced and efficient transport systems that allows the city to run like clockwork. This accommodates not only the city's fast paced business necessities, but also our deep-rooted traditional values of being connected with our family and friends.

COPYRIGHT BY ACEHK



COPYRIGHT BY ACEHK

Tsing Ma Bridge



COPYRIGHT BY ACEHK



COPYRIGHT BY ACEHK



COPYRIGHT BY ACEHK





COPYRIGHT BY ACEHK



COPYRIGHT BY ACEHK

Ting Kau Bridge and Tsing Ma Bridge



COPYRIGHT BY ACEHK

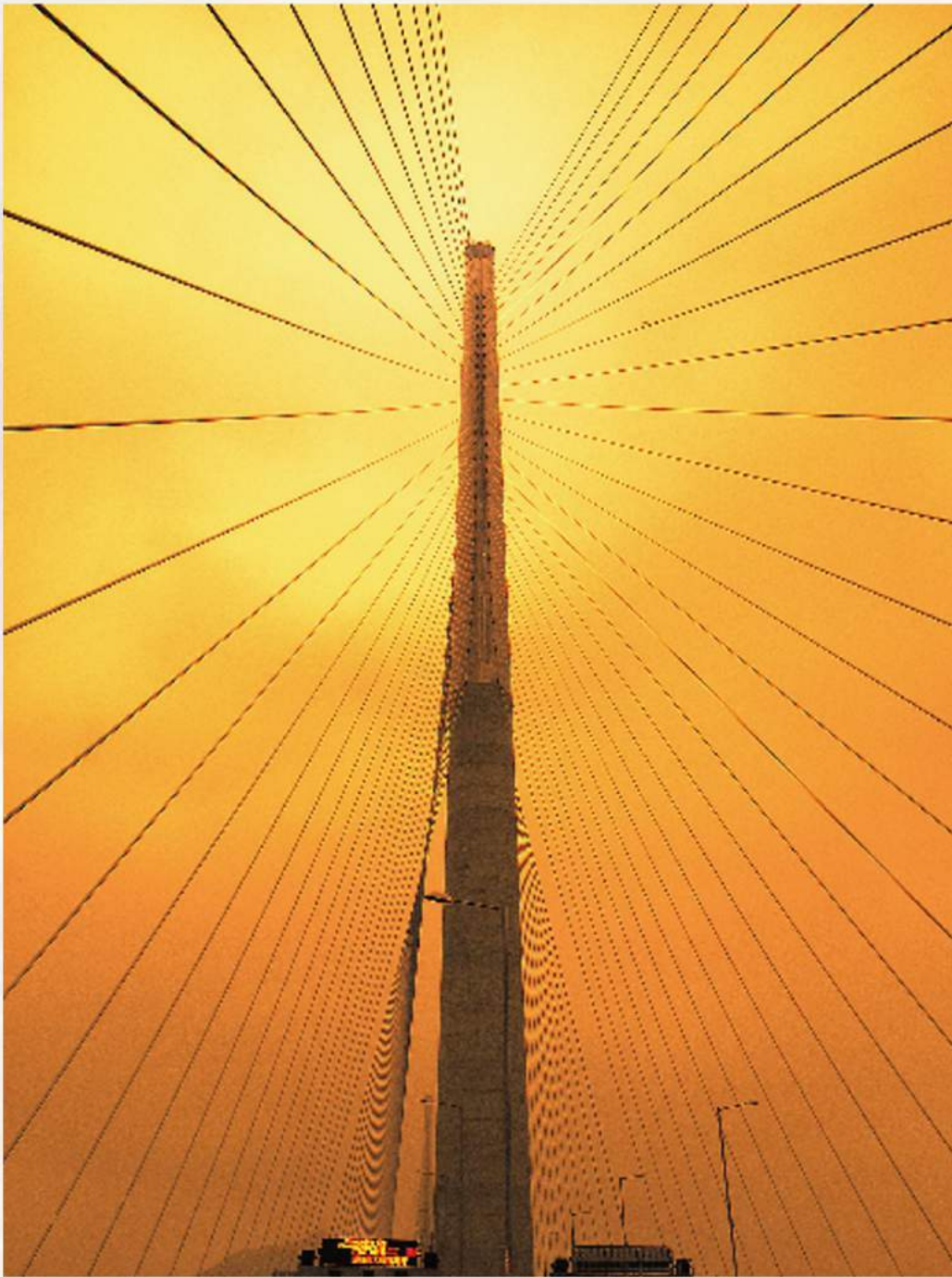


Ting Kau Bridge

Stonecutters Bridge







Fabrication of Subsea Tunnel Units of Hong Kong – Zhuhai – Macao Bridge



Hong Kong - Zhuhai - Macao Bridge



COPYRIGHT BY ACEH



COPYRIGHT BY ACEHK

Hong Kong-Shenzhen Western Corridor





Subsea Tunnel between Tuen Mun and North Lantau



COPYRIGHT BY ACEHK

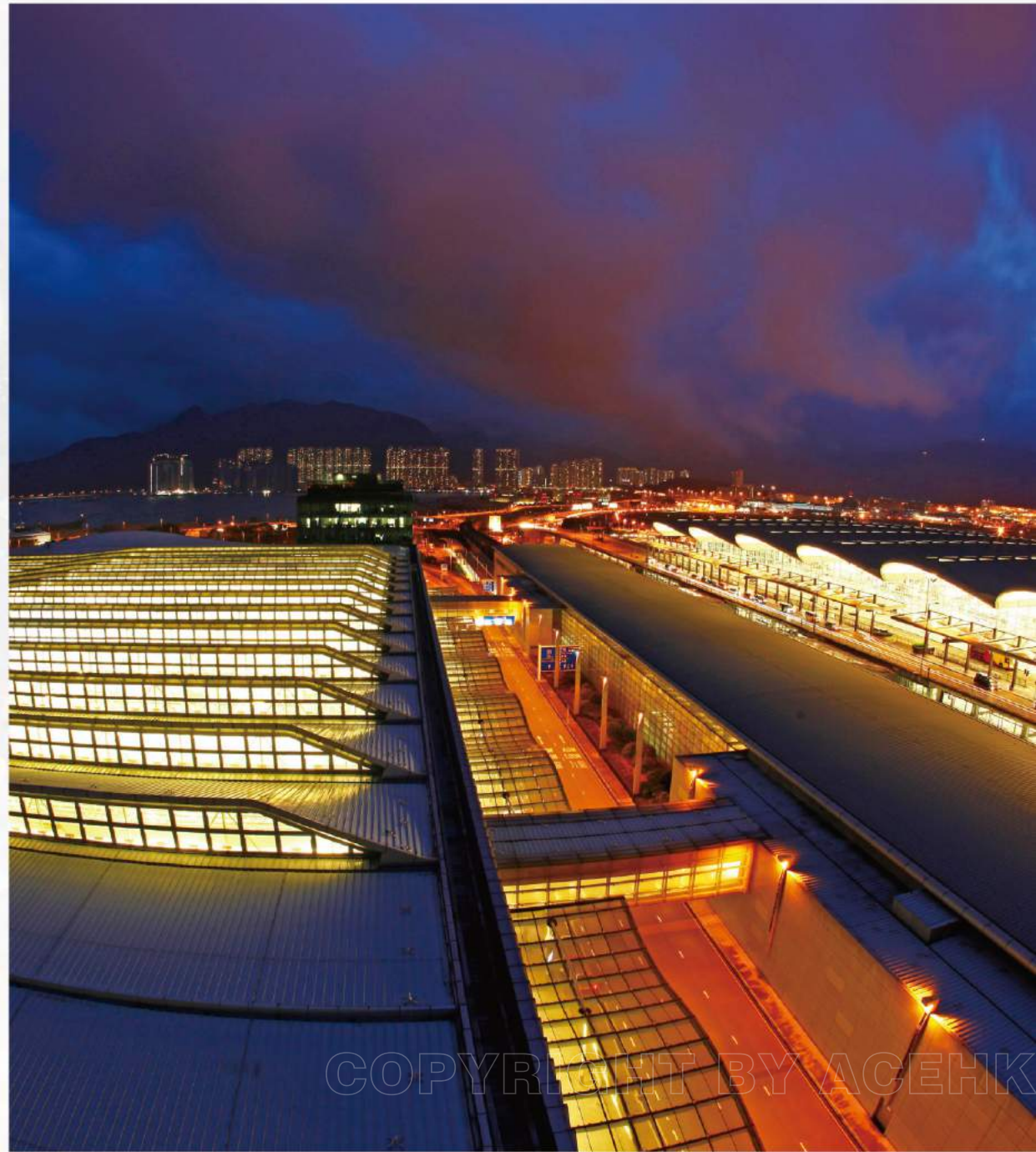




COPYRIGHT BY AEC



Hong Kong International Airport



COPYRIGHT BY ACEHK





OUR WATER & ENVIRONMENT RESOURCES

Hong Kong is one of the rare developed cities that seamlessly coexist with nature. Its varying landscape, from beaches to woodlands and mountain ranges, supports a biodiversity rare by any standard. This unique habitat serves both as a backdrop to the metropolis and as a haven to its inhabitants. While managing our water resources is essential for sustaining the population, the reservoirs built have become harmoniously part of the natural fabric. And efforts to improve our environment, through use of renewable energy and managing our resources and wastes, just keep going.

COPYRIGHT BY ACEHK

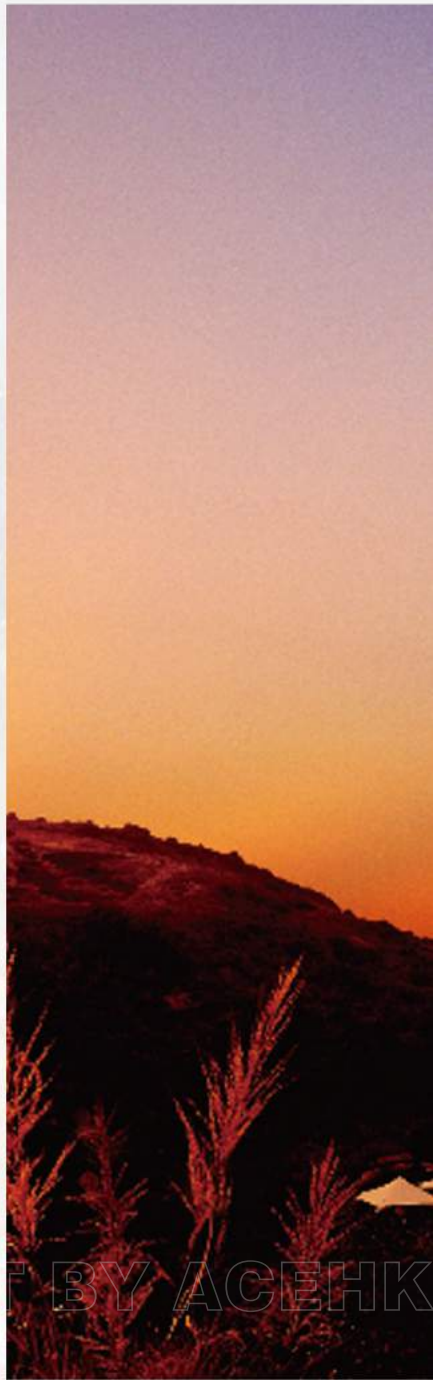


COPYRIGHT BY AOEHIK

High Island Reservoir



Tai Po Water Treatment Works



COPYRIGHT BY ACEHK



Lamma Winds



Butterfly Valley Fresh Water Primary Service Reservoir

THE ART OF CONSTRUCTION

Hong Kong is known for its fast-paced lifestyle, and the construction industry, and the need to cope with expectations of completing projects within a tight programme is no exception. Over the last few decades, the industry has been steadfast in introducing new construction technologies to the city. With more mechanized construction methods, not only have the speed and quality of construction been improved, but also the safety of construction. Nevertheless, it is the members of the construction industry, professionals and workers alike, who remain core to improving the built and natural environment through the engineering works.

COPYRIGHT BY ICEHK



COPYRIGHT BY ACEHK

FROM SHADOW TO LIGHT

Gold Award
(Individual Category)

From the deepest and the darkest place in Hong Kong that man has ever set foot on, our engineer fights his way towards hope and success with integrity and excellence in every step of the way. Step by step, he cautiously moves towards progress that he will be proud to say to the generations to come that he made our city a little better. Even unnoticed, the contribution he makes is unprecedented. That is an ENGINEER.

- CHAN See Tsun, Benny

COPYRIGHT BY ACEHK



COPYRIGHT BY ACEHK

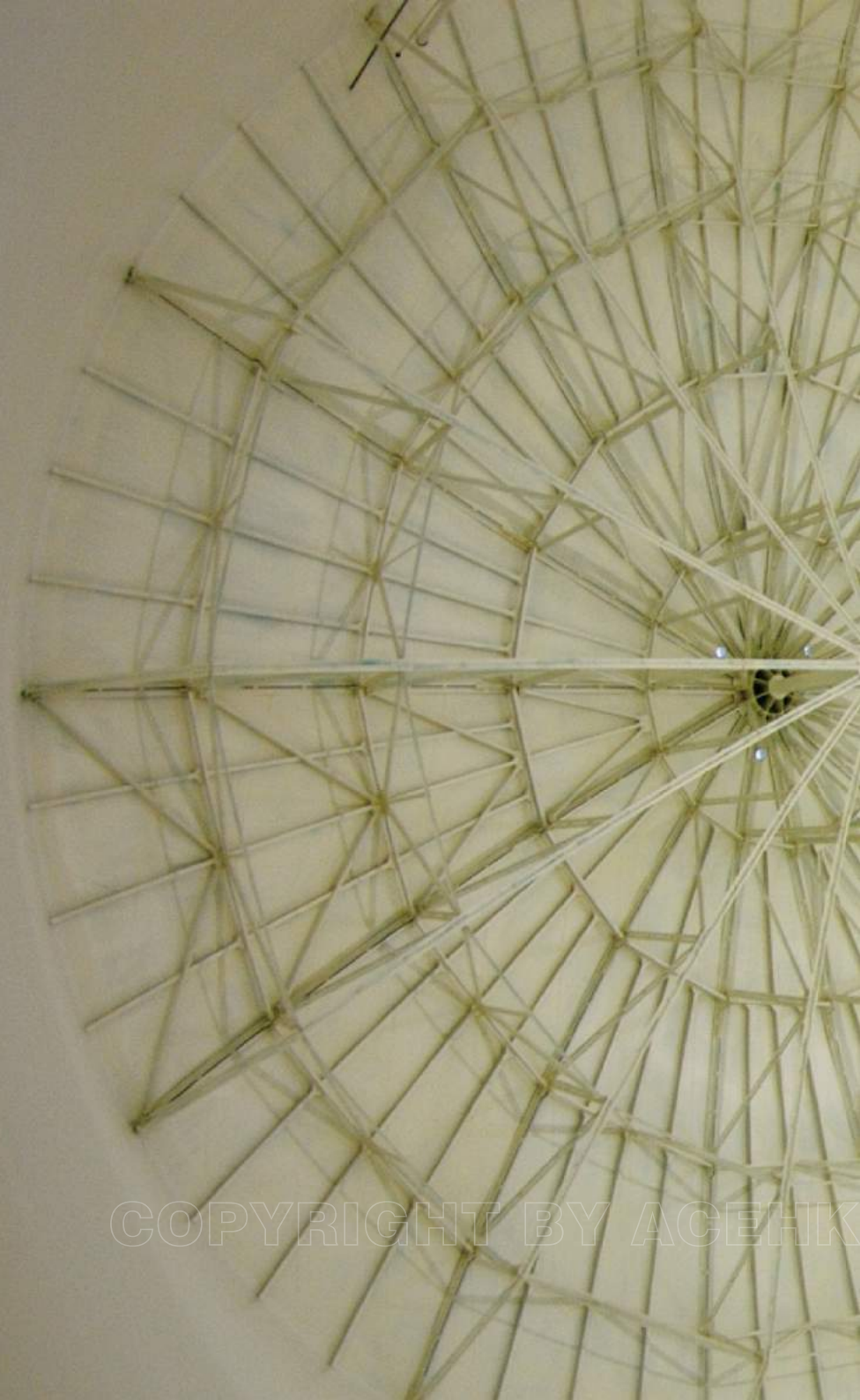
INNER WORLD OF ENGINEERING CREATION

Bronze Award
(Corporate Category)

Taken towards the end of the construction of the aviation fuel storage tanks at the Hong Kong International Airport on 2007. The inside of the tanks would not be accessible again once filled.

A rare view indeed.

- Ir Rex LIU



COPYRIGHT BY ACEHK



COPYRIGHT BY ACEHK



COPYRIGHT BY ACEH



A PURE SCIENCE

Gold Award
(Corporate Category)

Working under the royal-blue sky is not an easy job. Although the photo was taken with almost 200 workers nearby, the photograph captures that one moment where it looks like "pure science".

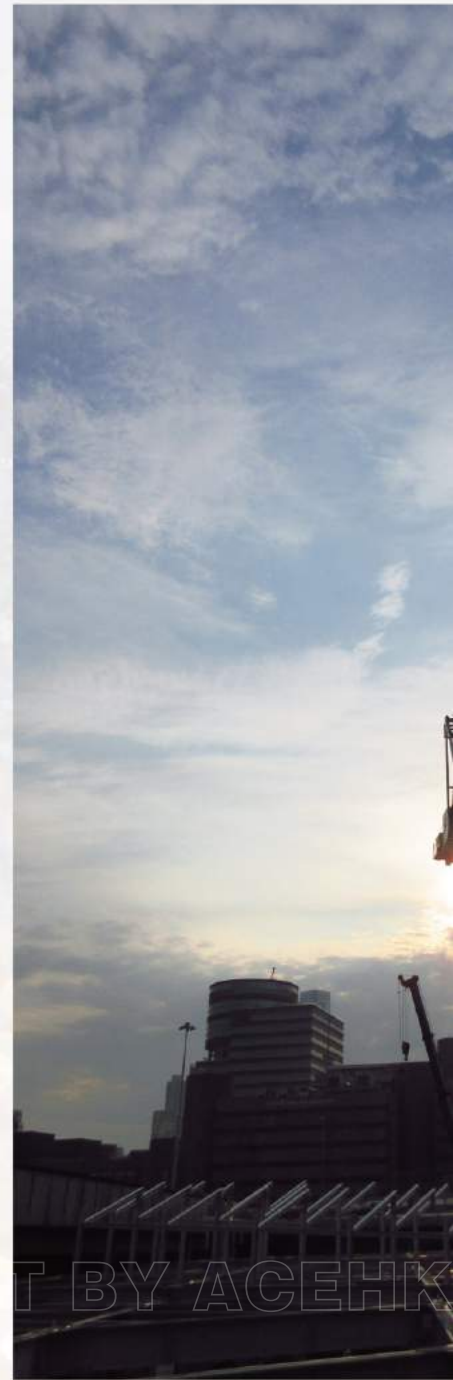
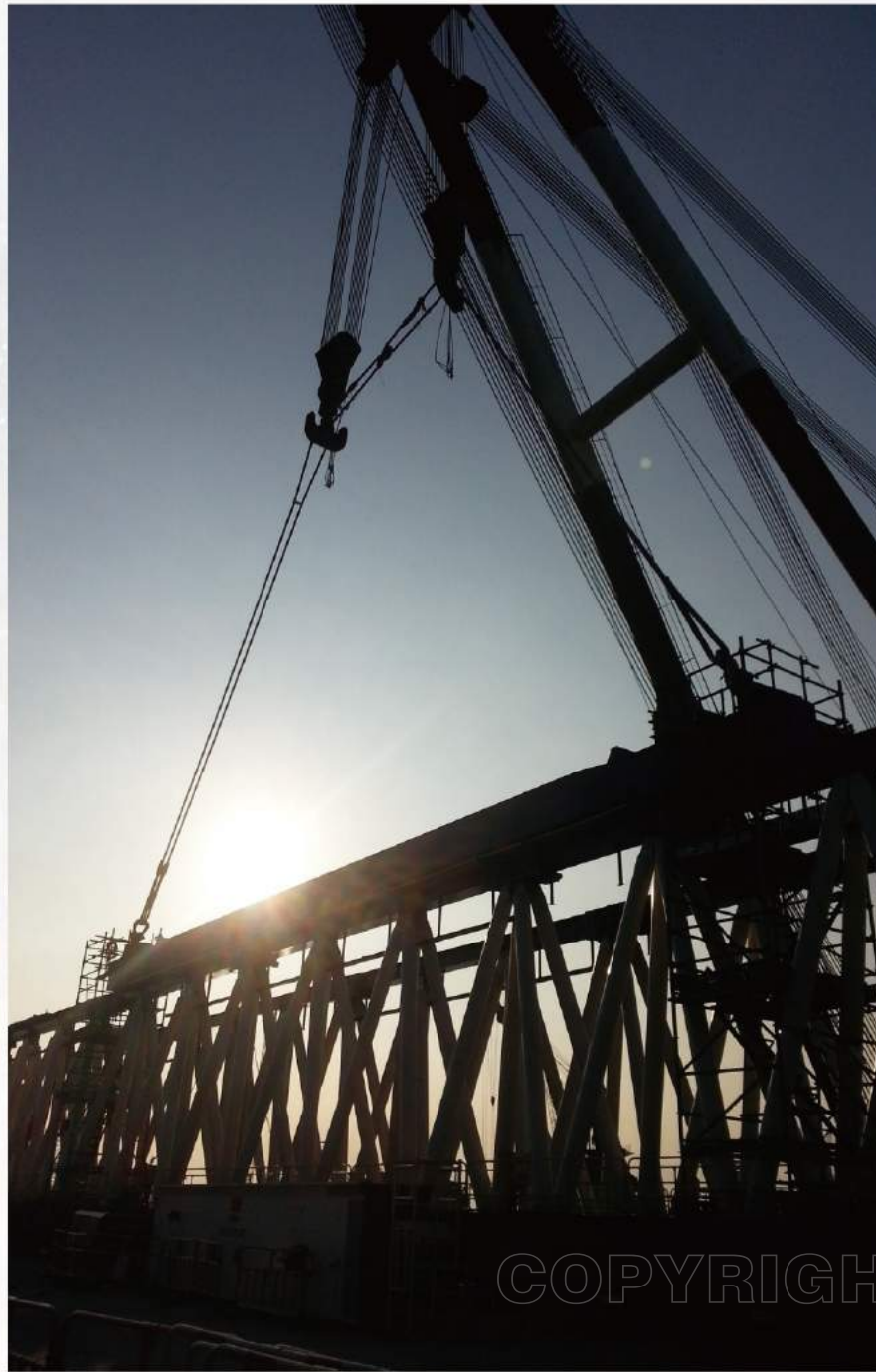
- SO Chi Chung



COPYRIGHT BY ACEHK



COPYRIGHT BY ACEH.K



COPYRIGHT BY ACEHK





COPYRIGHT BY ACEHK



COPYRIGHT BY ACEH

齊心便事成

Silver Award
(Individual Category)

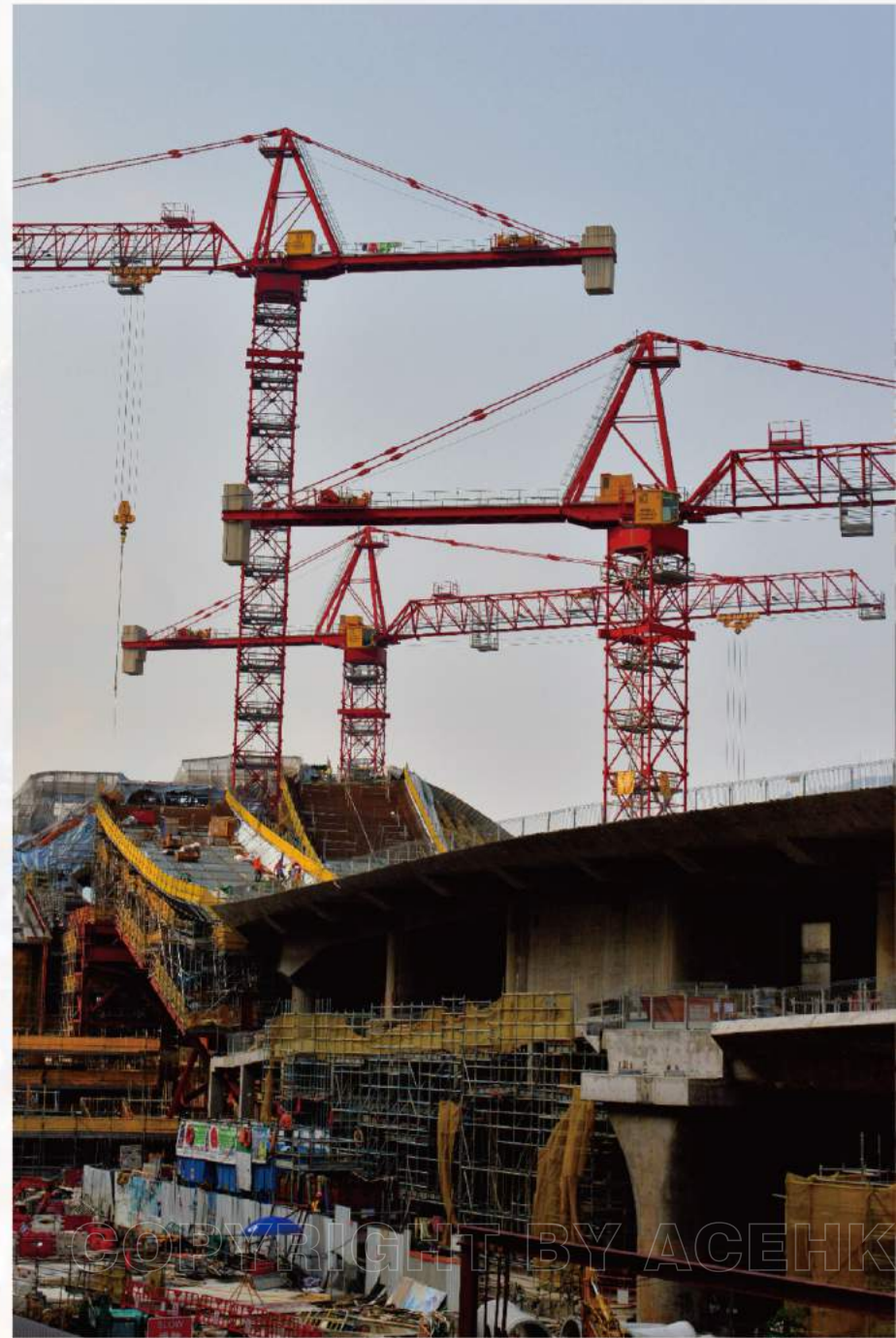
記憶拍攝時正值颱風將至，技工們同心協力，趕快把鐵籠接上，
放進大型鋼管內，再澆澆混凝土，趕在風雨前完成工程。
在這風雲變幻的瞬間，我亦趕著捕捉每刻的變化。

- HO Sai Lai



COPYRIGHT BY ACEHK





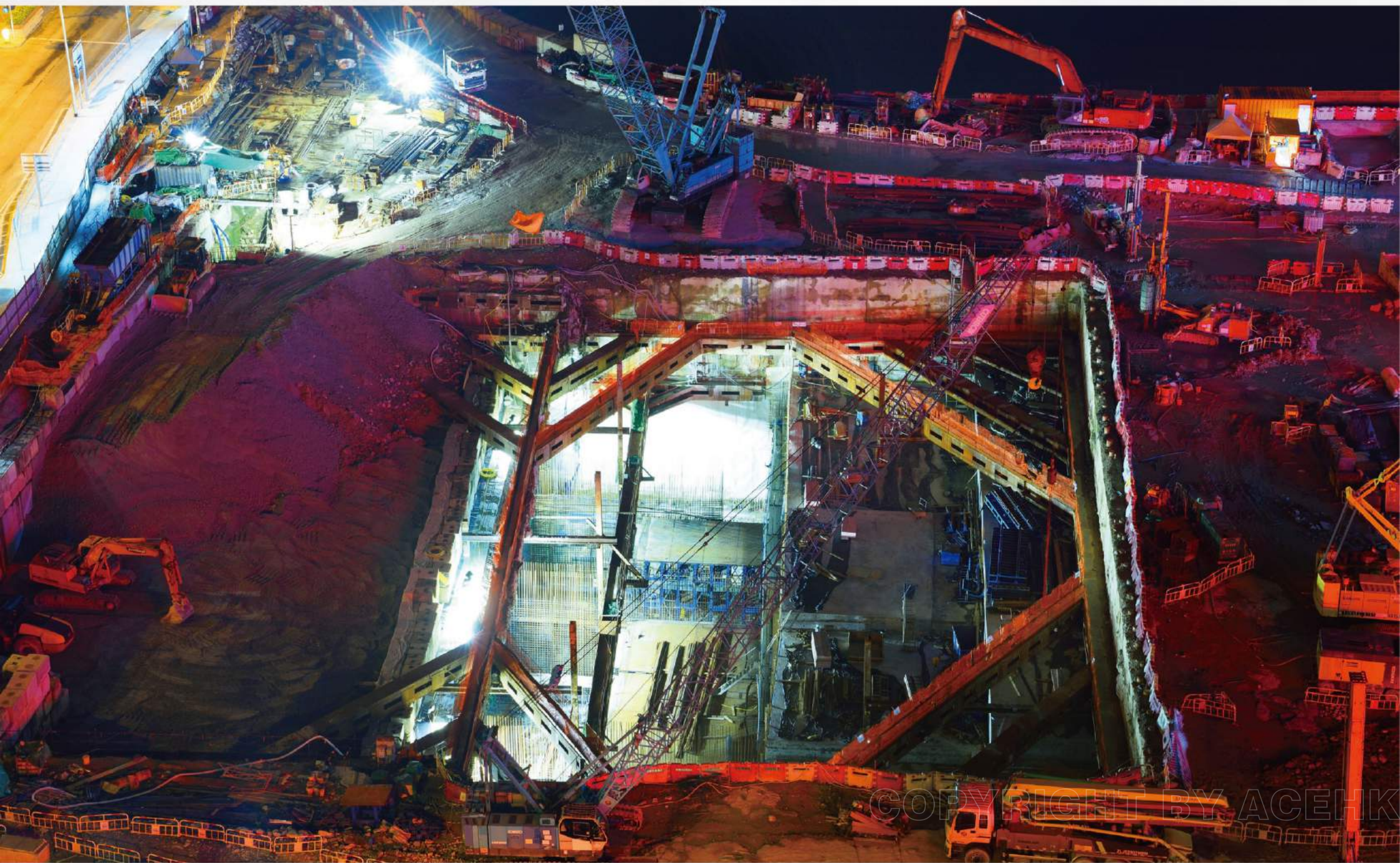


COPYRIGHT BY ACEHK





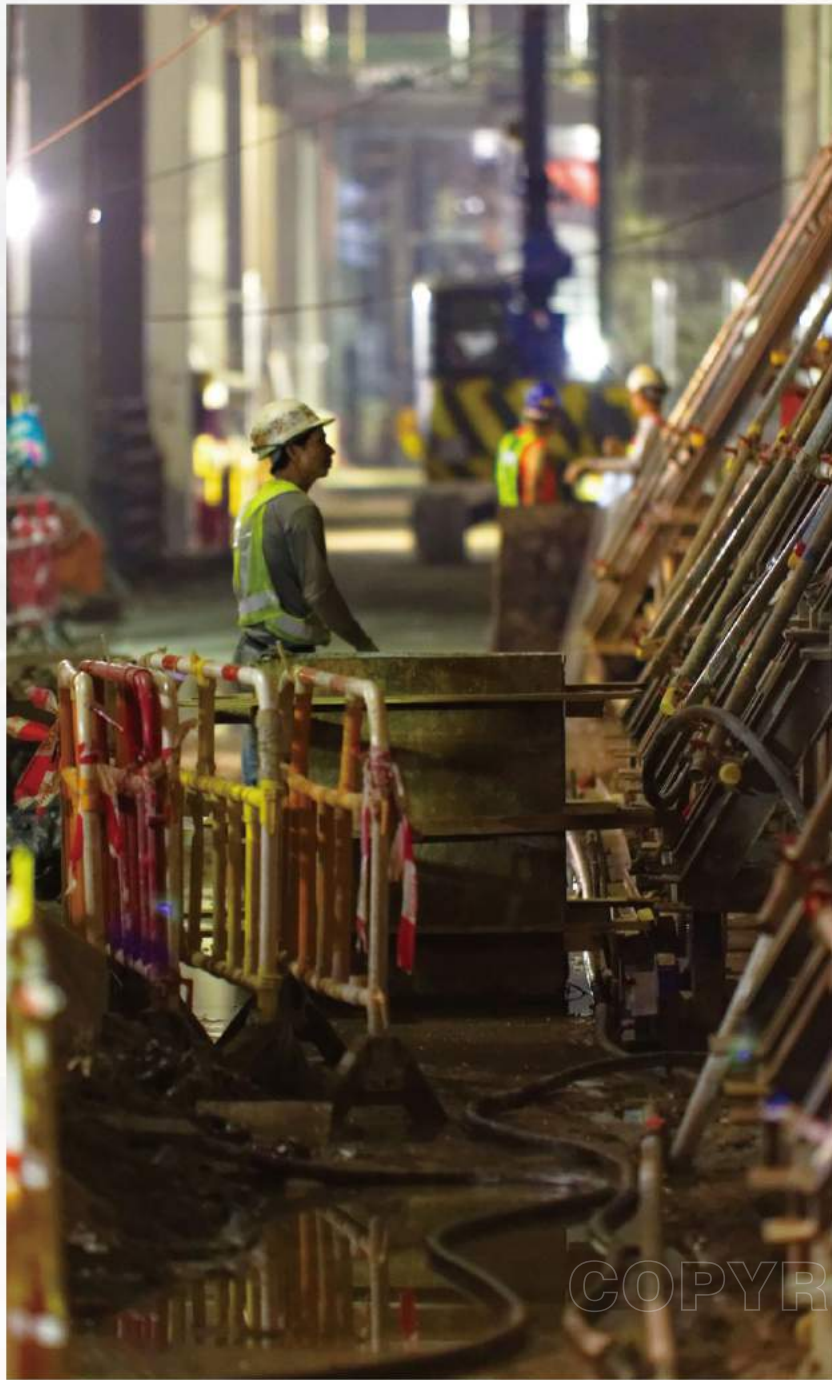
COPYRIGHT BY ACEH K











COPYRIGHT BY ACEHK







COPYRIGHT BY ACEHK



COPYRIGHT BY ACEHK



COPYRIGHT BY ACEHK





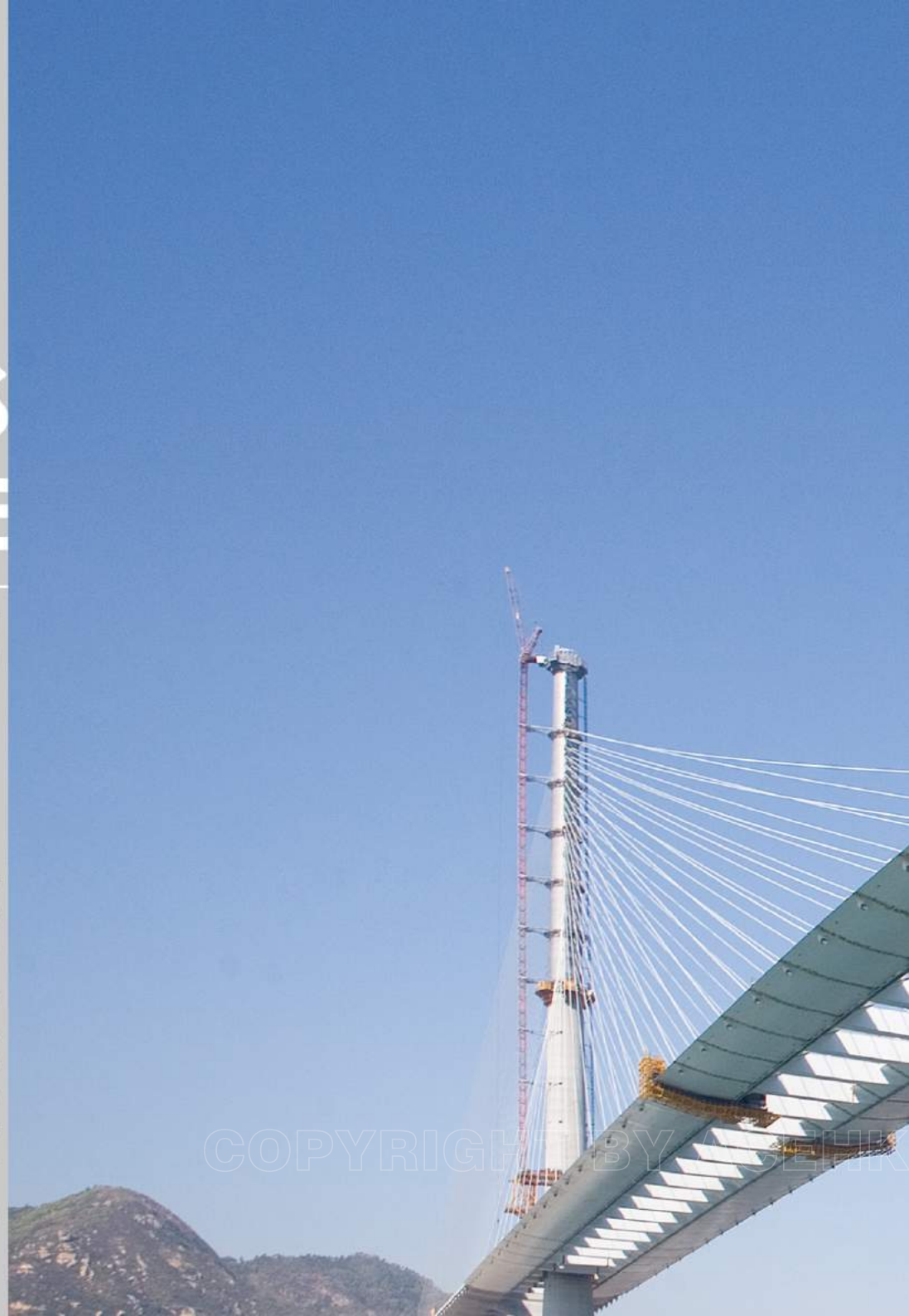
STONECUTTER'S BRIDGE

Silver Award
(Corporate Category)

Stonecutters Bridge is one of the longest cable-stayed bridges in the world. The bridge straddles the Rambler Channel at the entrance to the Kwai Chung container terminals, one of the world's busiest ports and trade centres.

With a highly distinctive form, the 1,018m main span cable stayed bridge's key design features include a 53m-wide deck split into two streamlined boxes connected by cross girders, the steel main span and concrete back spans supported by stay cables anchored on two 298m-tall mono-towers with lower concrete section and upper composite section with stainless steel skin. It is one of two cable-stayed bridges in the world with a main span in excess of 1,000m.

- Betty KOW



COPYRIGHT BY AECOM



COPYRIGHT BY ACEHK



© COPYRIGHT BY ACENK



COPYRIGHT BY ACEHK

PAST CHAIRMEN OF ACEHK

1977 - 1978	S.G. Elliott
1978 - 1979	J.W. Downer
1979 - 1980	J.F. Lindsay
1980 - 1983	R.K. Edgley
1983 - 1984	J.W. Downer
1984 - 1986	A.J. Vail
1986 - 1987	C.R. Coulson
1987 - 1989	G.R.A. Armistead
1989 - 1991	R.J. Garrett
1991 - 1993	D.R. Butler
1993 - 1994	F.S.Y. Bong
1994 - 1996	M.D. McMillan
1996 - 1998	K.T.K. Lau
1998 - 1999	M.H.C Kwong
1999 - 2001	T.C.K Shum
2001 - 2002	L.M. Lui
2002 - 2003	Augustine Li
2003 - 2004	C.W.T. Wong
2004 - 2005	J. Newby
2005 - 2006	Wilfred Lau
2006 - 2007	Reuben Chu
2007 - 2008	Dickson Lo
2008 - 2010	Alex Kwan
2010 - 2011	Fergal Whyte
2011 - 2012	Colin Chung
2012 - 2013	Alan Man
2013 - 2014	Ronnie Thomson
2014 - 2015	Eric Li (up to 18 May 2015) Ian Chung (from 19 May 2015)
2015 - 2016	Ian Chung



ACEHK Council 2016/2017

Chairman

Ir Francis W C KUNG

Immediate Past Chairman/ Council Member

Ir Ian S P CHUNG

Vice Chairman

Ir Tommy NG

Honorary Secretary

Ir David C H CHANG

Honorary Treasurer

Ir Francis SOOTOO

Council Member

Ir Raymond P C CHAN

Jon PAVEY

Ir Clement CHUNG

Ir Stephanus SHOU

Ir Kenneth S K LI

Ir Rupert LEUNG

Ir TONG Wai Lok

[Back from Left]

Rupert Leung, Clement Chung, Tong Wai Lok, Stephanus Shou, Kenneth Li, Jon Pavey, Raymond Chan

[Front from Left]

Francis Sootoo, Tommy Ng, Francis Kung, David Chang, Ian Chung

MEMBERS *of* ACEHK

(As of June 2017)

- AECOM Asia Co Ltd
- AIM Group Ltd
- Arcadis Design & Engineering Ltd
- Atkins China Ltd
- Au Posford Consultants Ltd
- Aurecon Hong Kong Limited
- Benaim Ltd
- Black & Veatch Hong Kong Ltd
- C M Wong & Associates Ltd
- CH2M – Halcrow China Ltd
- FL Engineering Consulting Ltd
- Fugro (Hong Kong) Ltd
- Hewson Consulting Ltd
- J Roger Preston Ltd
- Jacobs China Limited
- Lovegrove Ltd
- Mannings (Asia) Consultants Ltd
- Maurice Lee and Associates Ltd
- Meinhardt (HK) Ltd
- Mott MacDonald HK Ltd
- MVA Hong Kong Ltd
- Ove Arup & Partners Hong Kong Ltd
- Region Fine (HK) Ltd
- Richard Chan & Associates Ltd
- SMEC Asia Ltd
- Thomas Anderson & Partners (HK) Ltd
- Tony Gee and Partners (Asia) Ltd
- WSP | Parsons Brickerhoff

ACKNOWLEDGEMENTS

We would like to formally express our thanks to all the entrants of our photography competition in which their contribution made this album possible.

AU Ying Lun
CHAN See Tsun Benny
CHAN Simon
CHEUNG Hang Shan Michael
CHEUNG Tak Lung
CHEUNG Wai Kuen
CHIU Wing Yee
CHIU Po Law
CHOW Ho Sum
CHU Kwok Hei
CHUNG Kim Pan
CHUNG Tak Wan
Emmanuel DUOLE
FONG Ka Wai Vicki
FONG Kin Lun
FONG Ka Wai Nickman
FUNG Kwok Wa
HO Sai Lai
HUI Yau Tat
IP Ka Wing Jay
LAM King Hong John
LAM Ming Kong
LAM Karina

LAM Kwok On
LAU Tak Wai
LAU Tak Fai
LAU Wan Chi
LAU Ka Kit
LAW Chit Kwong
LEE Wing Nang Ken
LEE Sau Chun
LEE Sai Hung
LEE Chun Kit
LEUNG So Sum
LEUNG Wai Kit
LI Cheuk Wing
LUN Ka Wing

Katrina LAM (AECOM)
Betty KOW (Ove Arup & Partners (HK) Ltd)
SO Chi Chung (Black & Veatch Hong Kong Ltd)
SO Tsz Lu (Chun Wo Department Holdings Ltd)
Rex LIU (Atkins)

MONG Yuet Mui
SHIU CY
SIU Yat Lung Baggio
SUNG Chiu Wai
TANG Ka Wai Eric
TANG Yat Hang
TANG Yin Leuk
TIN Wong Sik
TO Tze Shing
TONG Chi Wing Juson
TONG Ping Tat
TSANG Tak Wa
TSE Ching Chung
TSE Ka Shing

TSO Bing Yiu Toby
WAI Yiu Hung Andy
WONG Chi Keung Ricky
WONG Chung Yee Carrie
WONG Ching Yin Peter
WONG Chun Kong
WONG So Peter
WONG Tsz Kam
YAM Kit Kuen
YIP Siu Ping Anty
YIP Shiu Kuen
YU Choi Chun Cindy
YU Erica

Copyrights of text and images in this Album belong to The Association of Consulting Engineers of Hong Kong and their respective owners. The text and images may not be reproduced, duplicated or reprinted without express written permission.



The Association of Consulting Engineers of Hong Kong
香港顧問工程師協會